

bouw geen zorgwoningen

NVTZ, 5 december 2024

coact
huisvestingsadvies

bouw geen zorgwoningen



Johan Thijssen

cact
huisvestingsadvies



Joseph Schumpeter



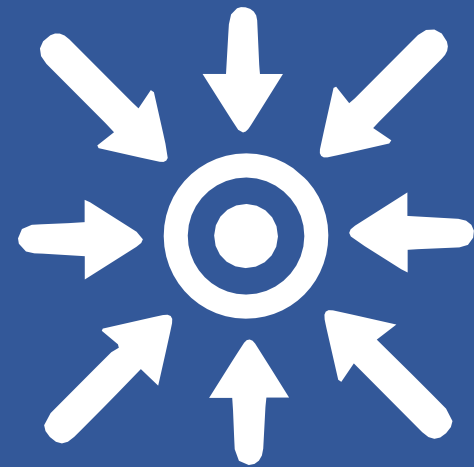




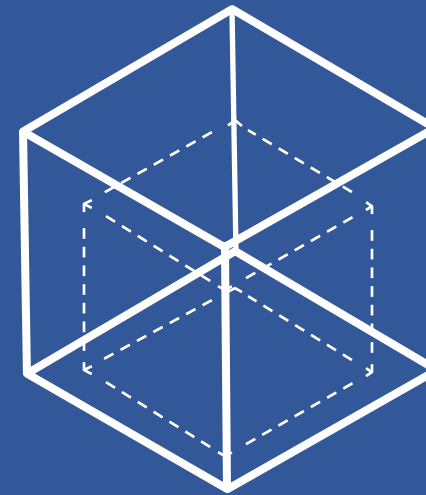
- Financiële risico's
- Operationele risico's
- Strategische risico's
- Juridische risico's en wet- en regelgeving
- Duurzaamheid en milieu
- Reputatierisico's
- Risico's voor cliënten en medewerkers



Te duur



Te specifiek



Te groot



Ontbreken van kennis

Kennis



Stimuleren



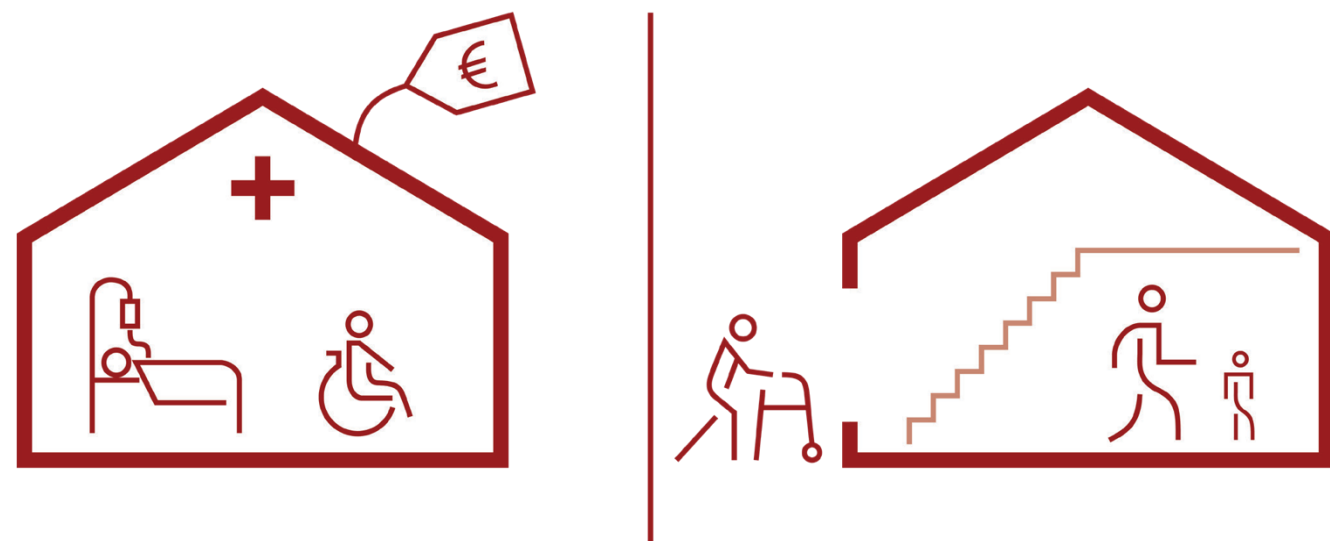
Stimuleringsregeling Zorggeschikte Woningen (SZGW)

Gepubliceerd op: 14 september 2023 Laatste gecontroleerd op: 17 januari 2024

De Stimuleringsregeling voor Zorggeschikte Woningen (SZGW) helpt woningcorporaties en zorgaanbieders woningen te bouwen en transformeren. De subsidie is voor geclusterde, zorggeschikte woningen voor sociale huur. Daarin kunnen mensen met een kleine beurs langer zelfstandig wonen.

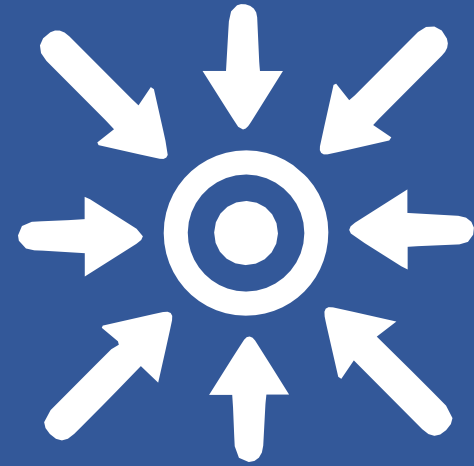


Wonen met én zonder zorg

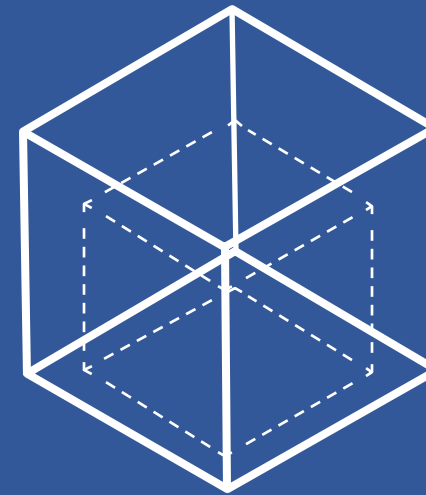




Te duur



Te specifiek



Te groot



Ontbreken van kennis

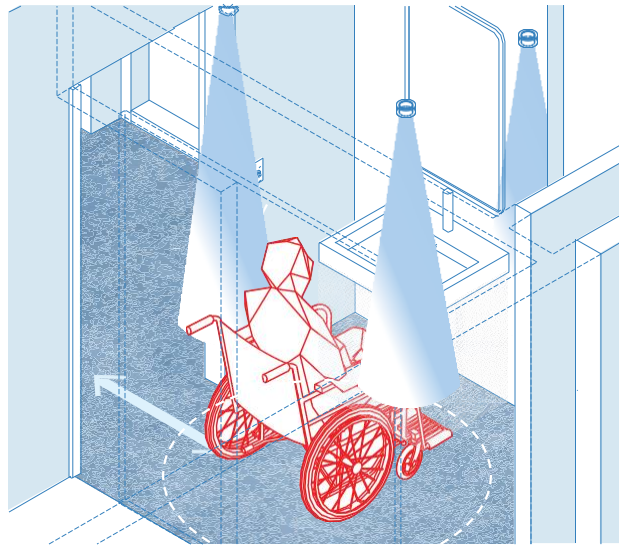


bouw geen zorgwoningen

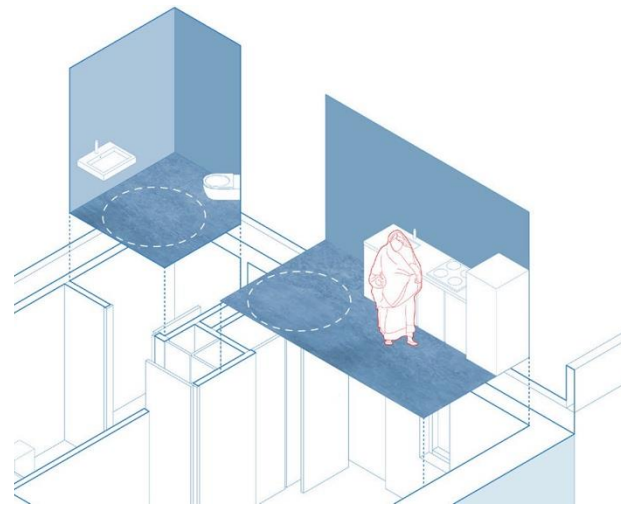
Maak alle woningen geschikt!



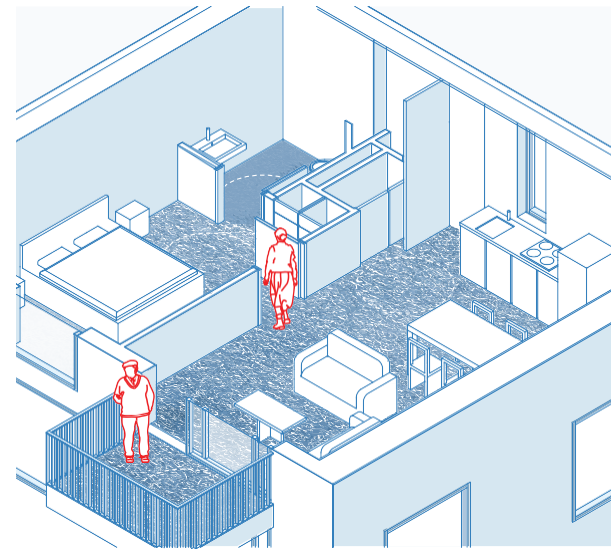
Eenvoudige aanpassingen



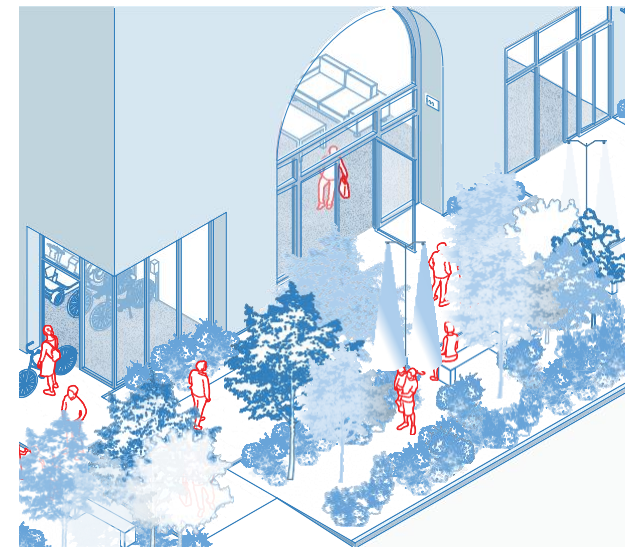
Matjes



Plattegronden



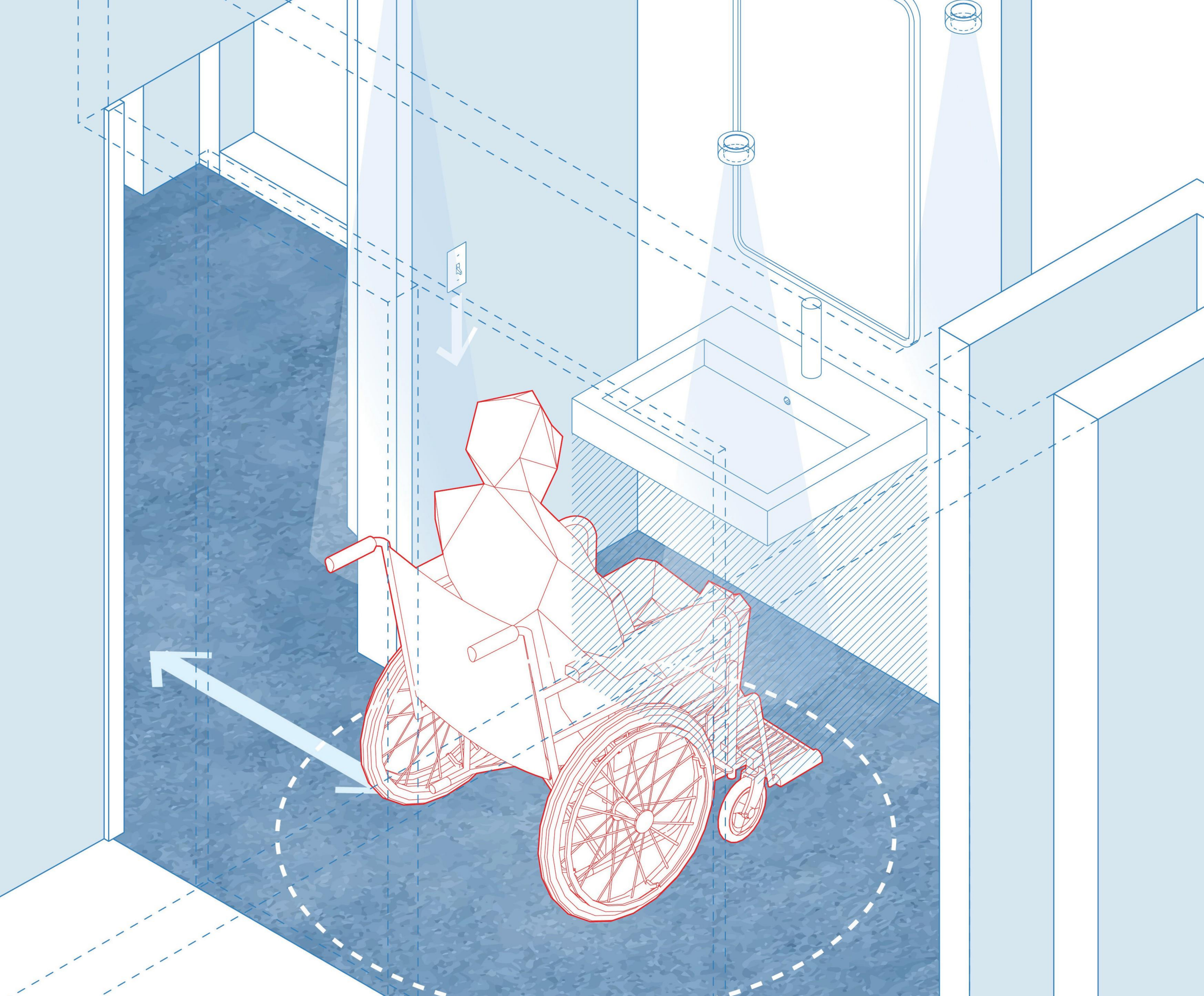
Wooncomplex



Buurt



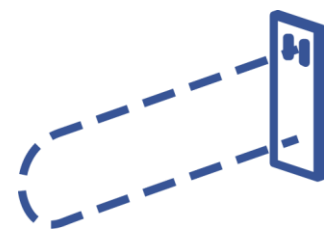
Eenvoudige aanpassingen



Eenvoudige aanpassingen



Deurbel binnen handbereik



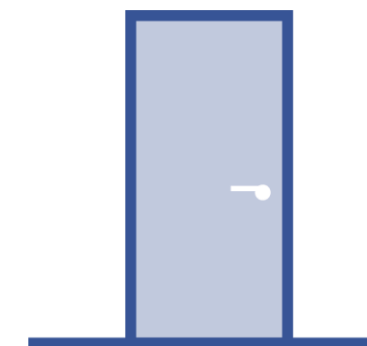
Vooraf aanbrengen achterhout



Drempelvrije douche



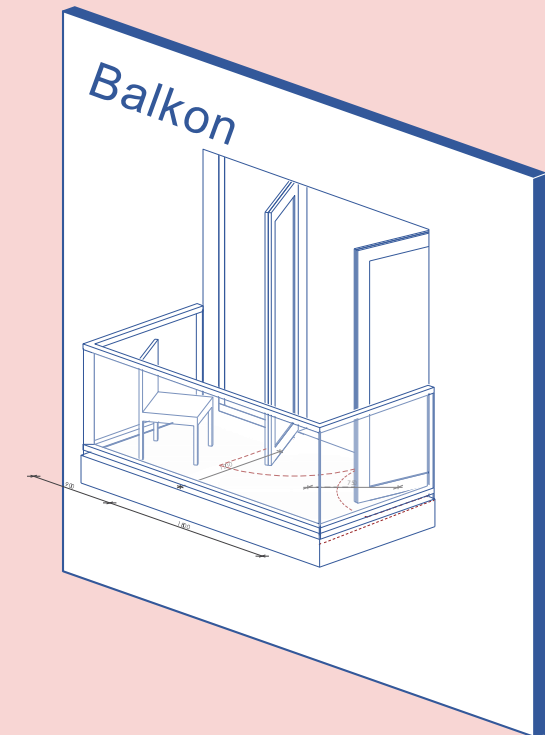
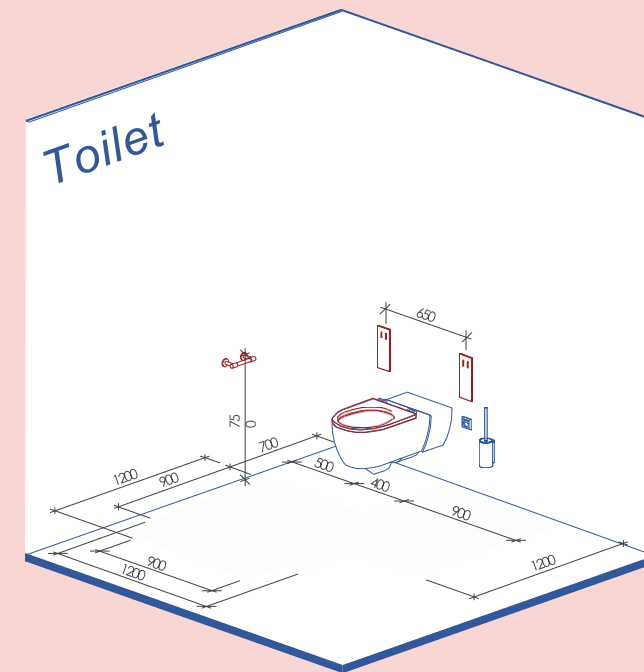
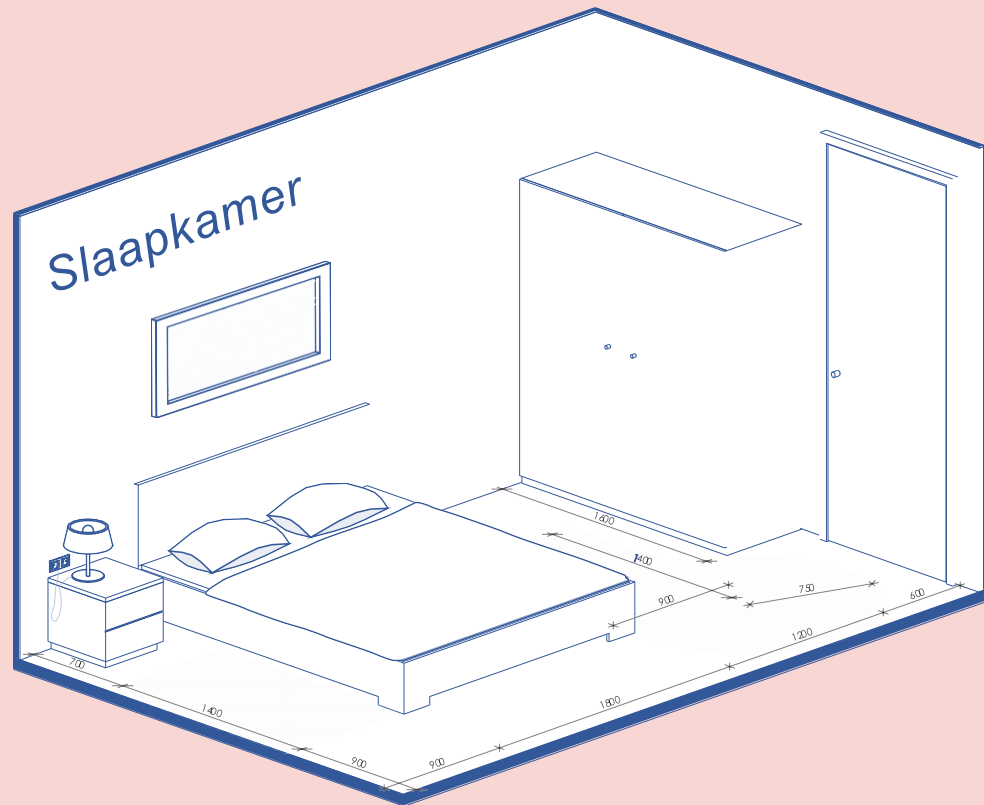
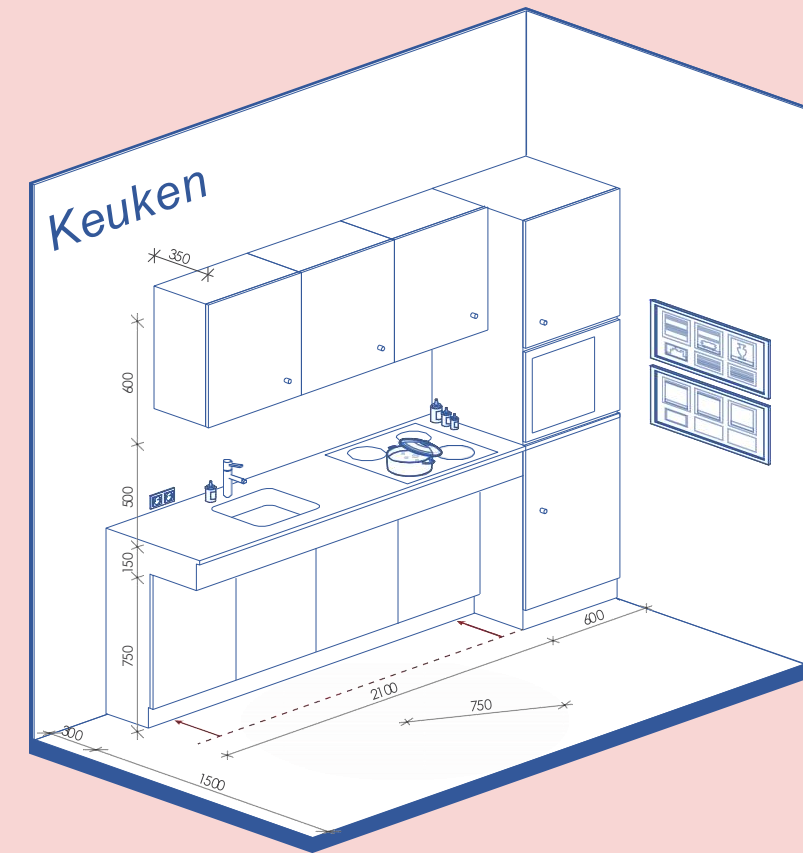
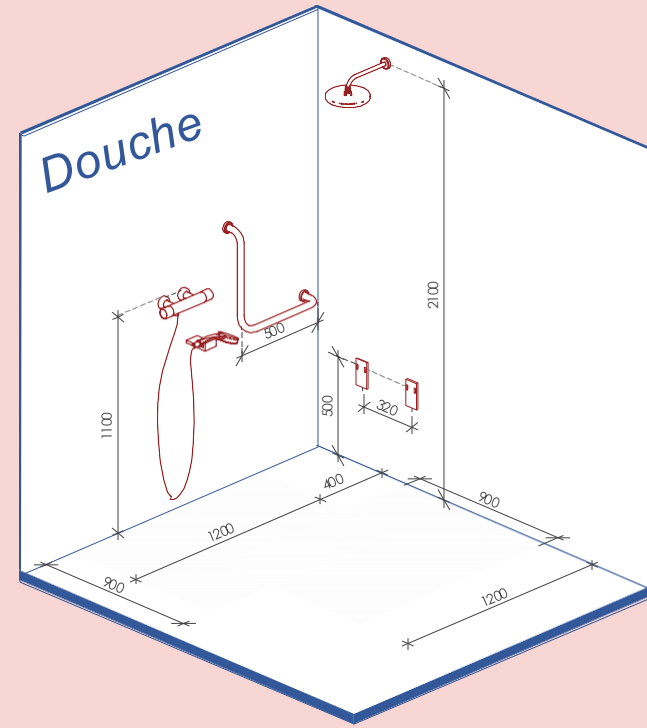
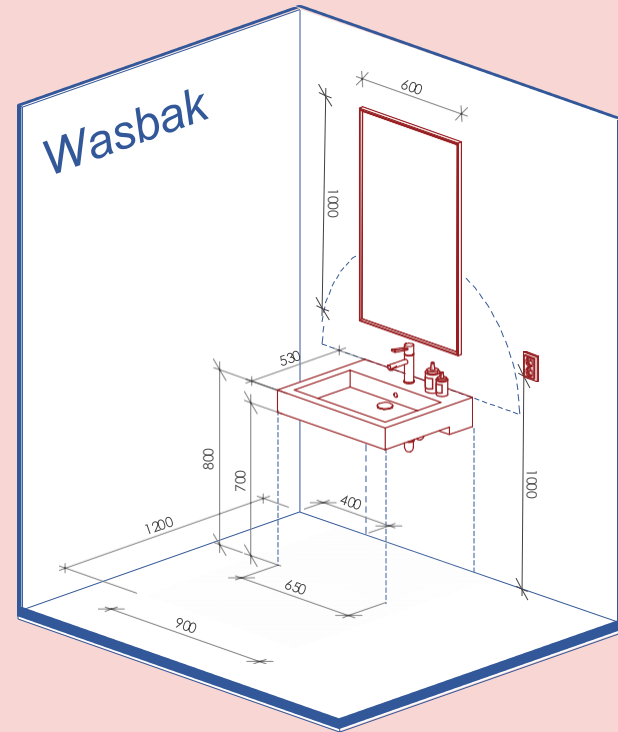
Onderrijdbare aanrechten



Duidelijk kleurcontrast

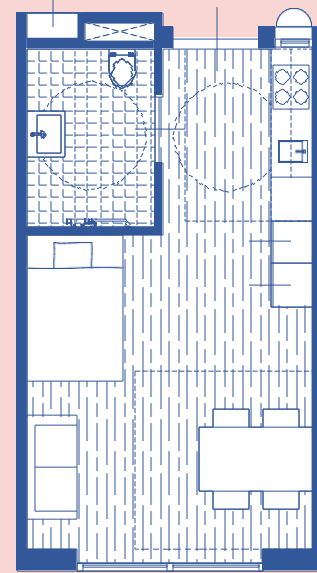
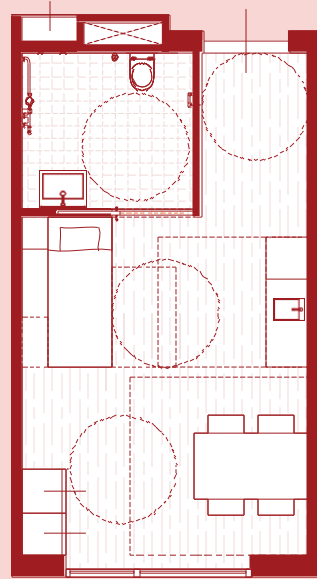


Goede verlichting

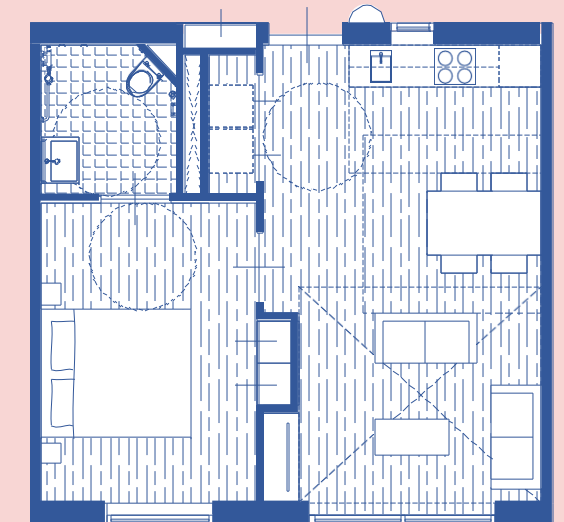
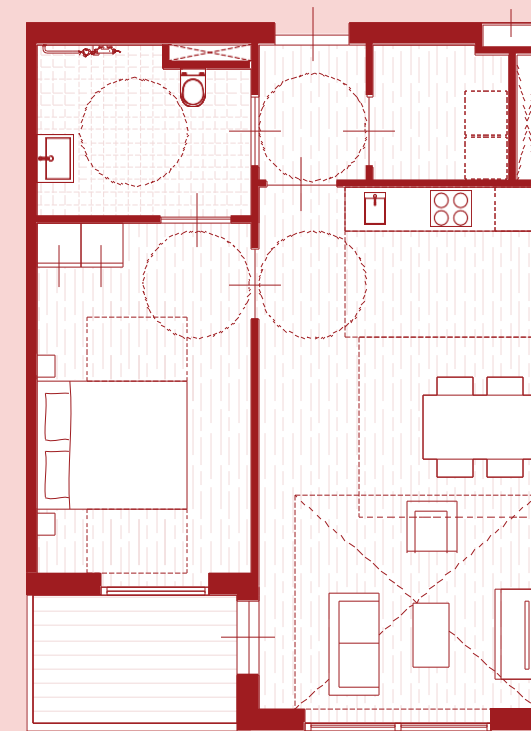


Woningen

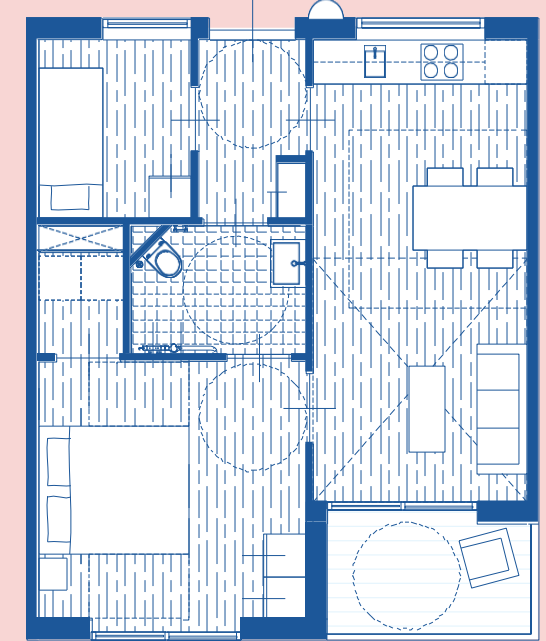
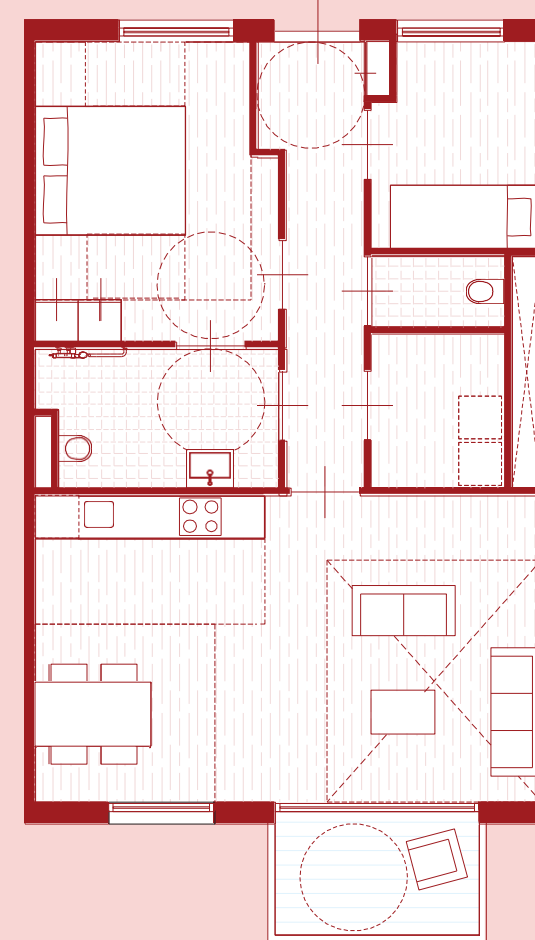
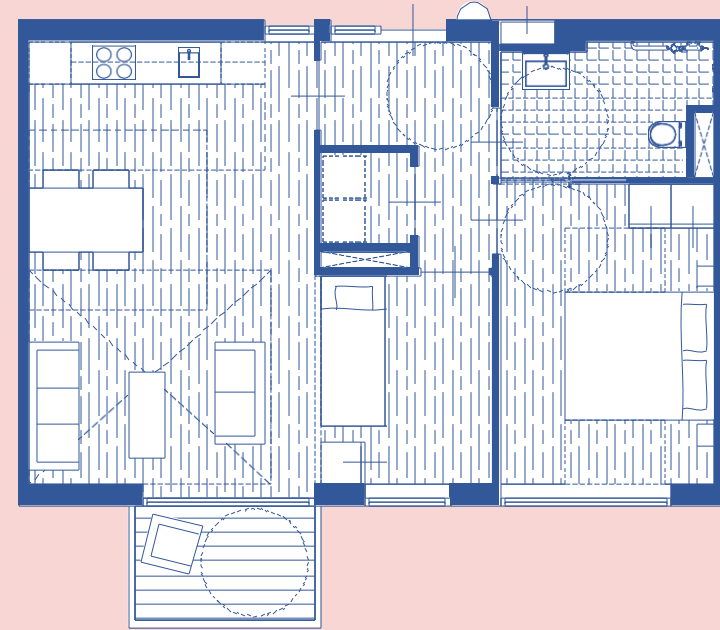
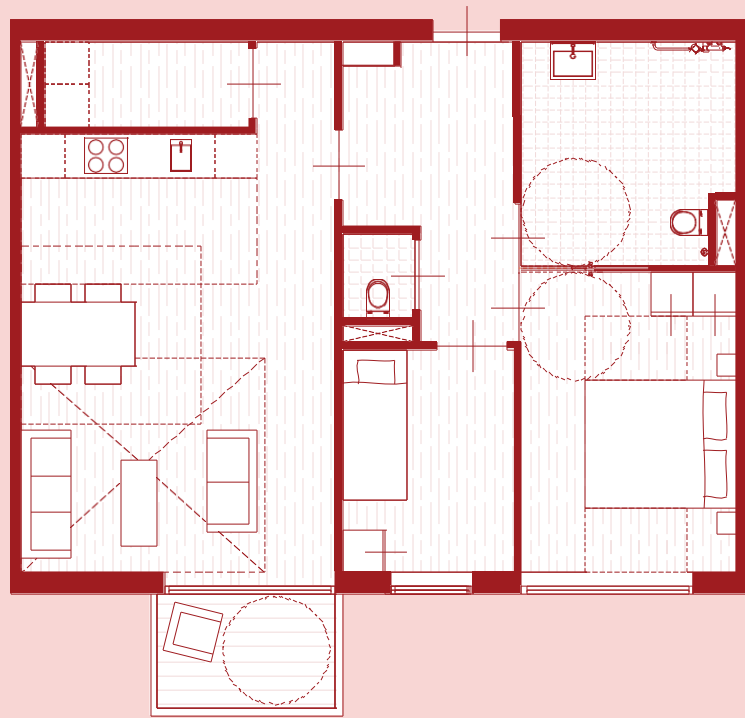




Conventionele zorgwoning - 1 kamer - 28 m² GO
Zorggeschikte woning - 1 kamer - 28 m² GO



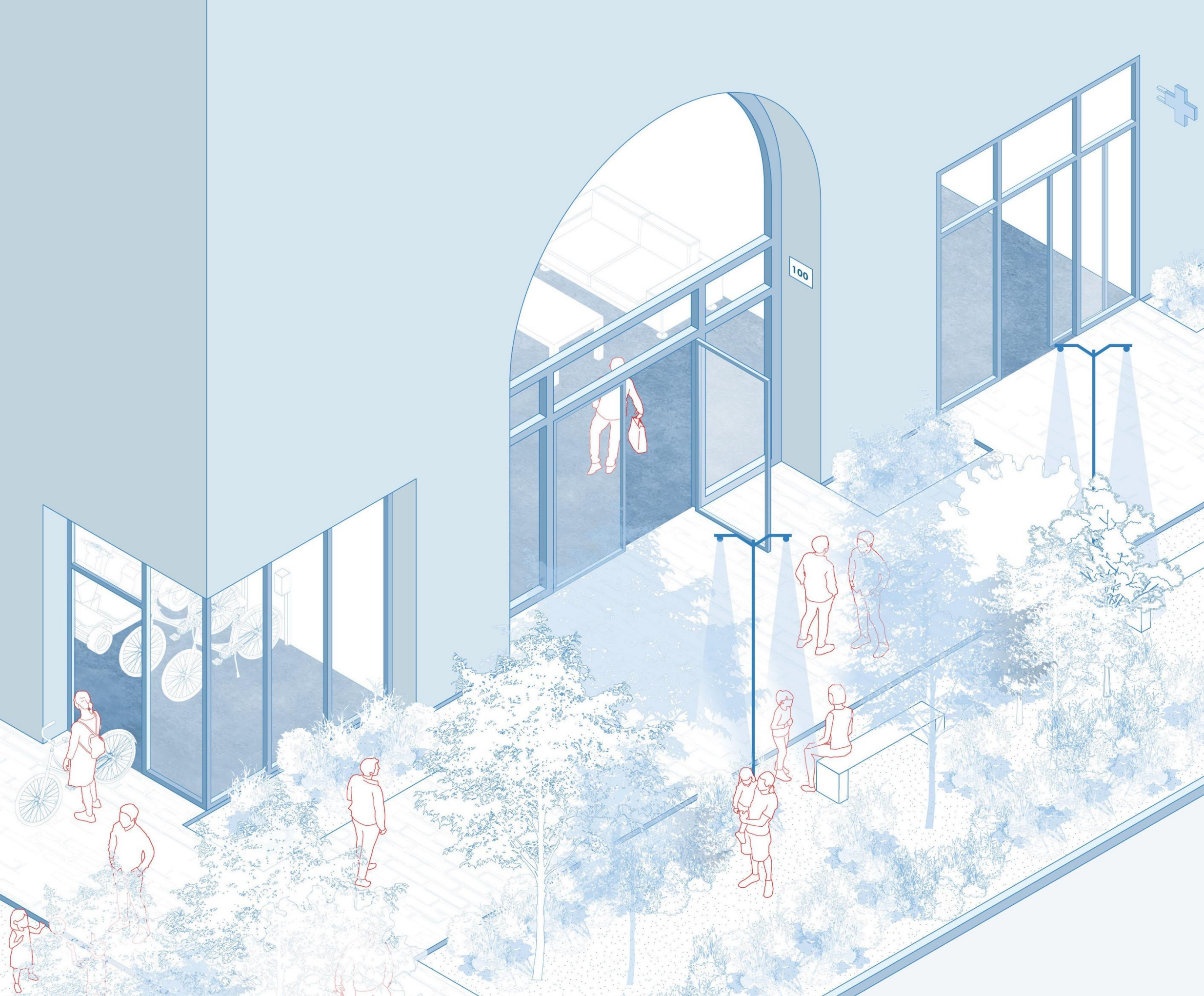
Conventionele zorgwoning - 2 kamer - 60 m² GO
Zorggeschikte woning - 2 kamer - 44 m² GO



Conventionele zorgwoning - 3 kamer - 75 m² GO
Zorggeschikte woning - 3 kamer - 49 m² GO

Conventionele zorgwoning - 3 kamer - 74 m² GO
Zorggeschikte woning - 3 kamer - 49 m² GO

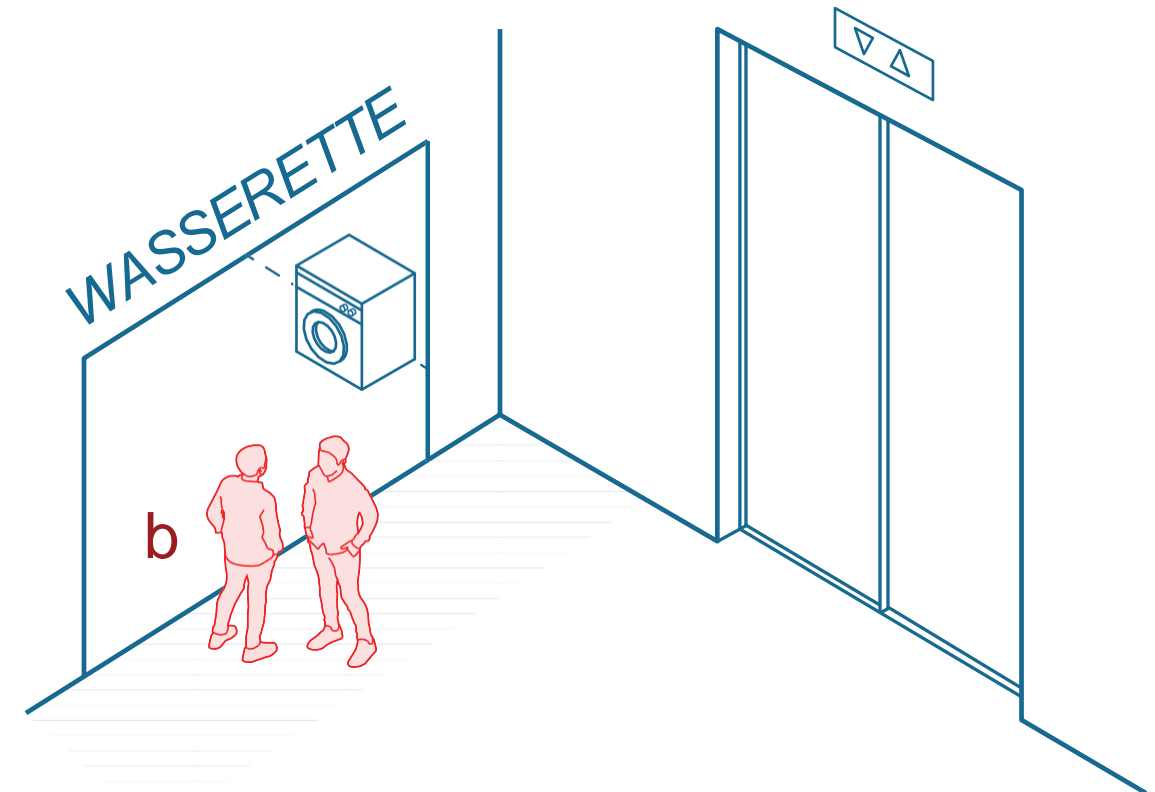
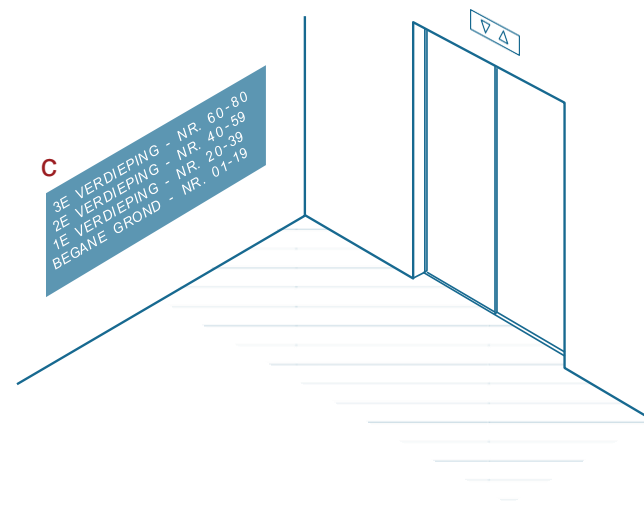
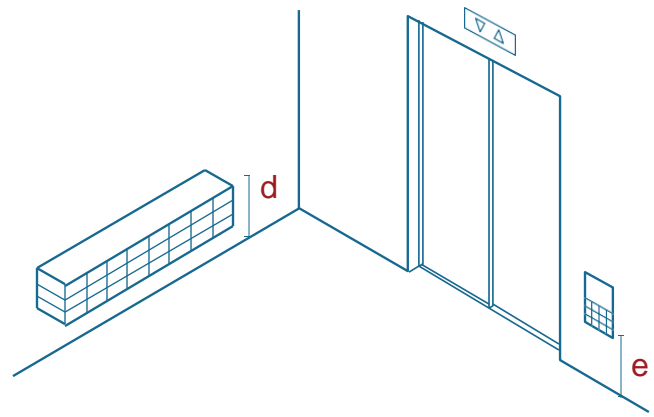
Leefbaar gebouw



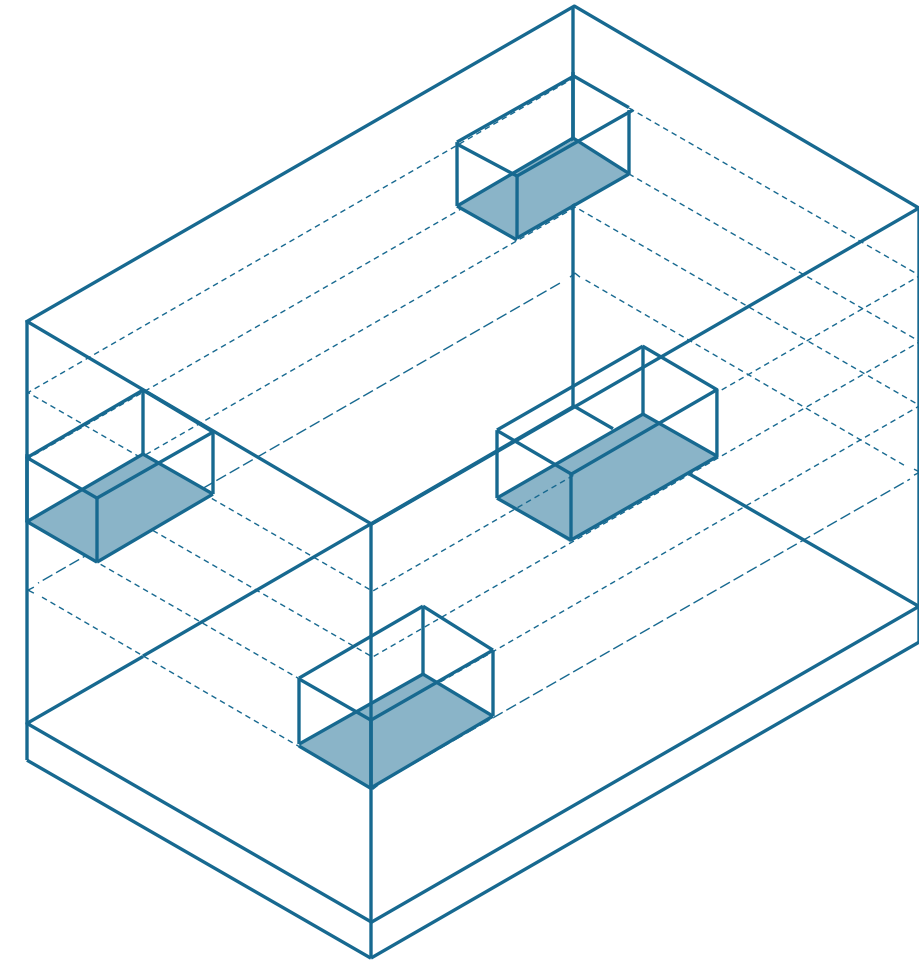
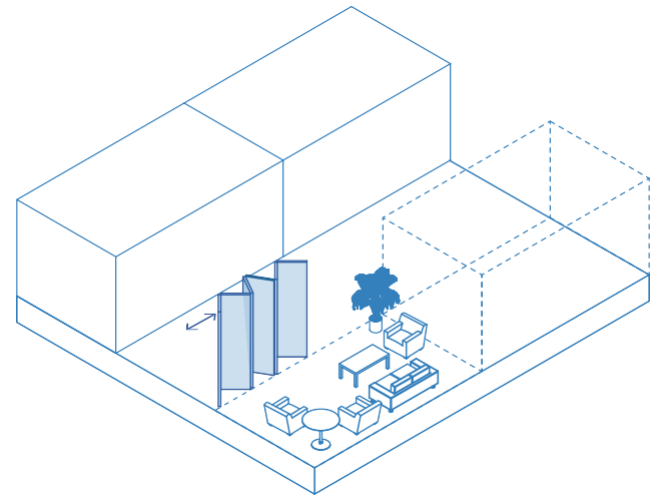
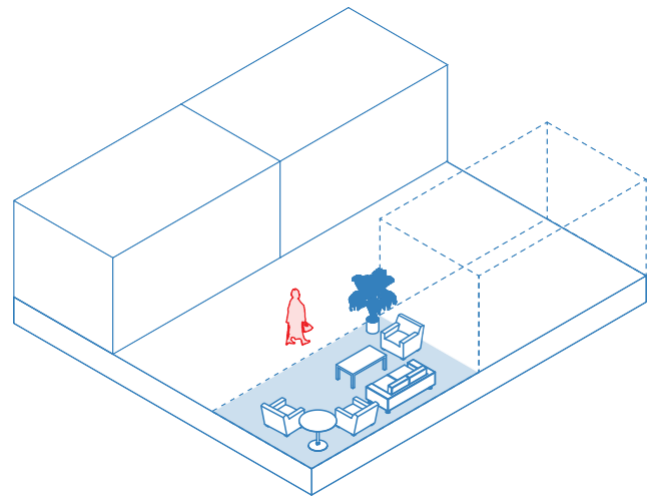
It takes a village to grow old



Centraal punt



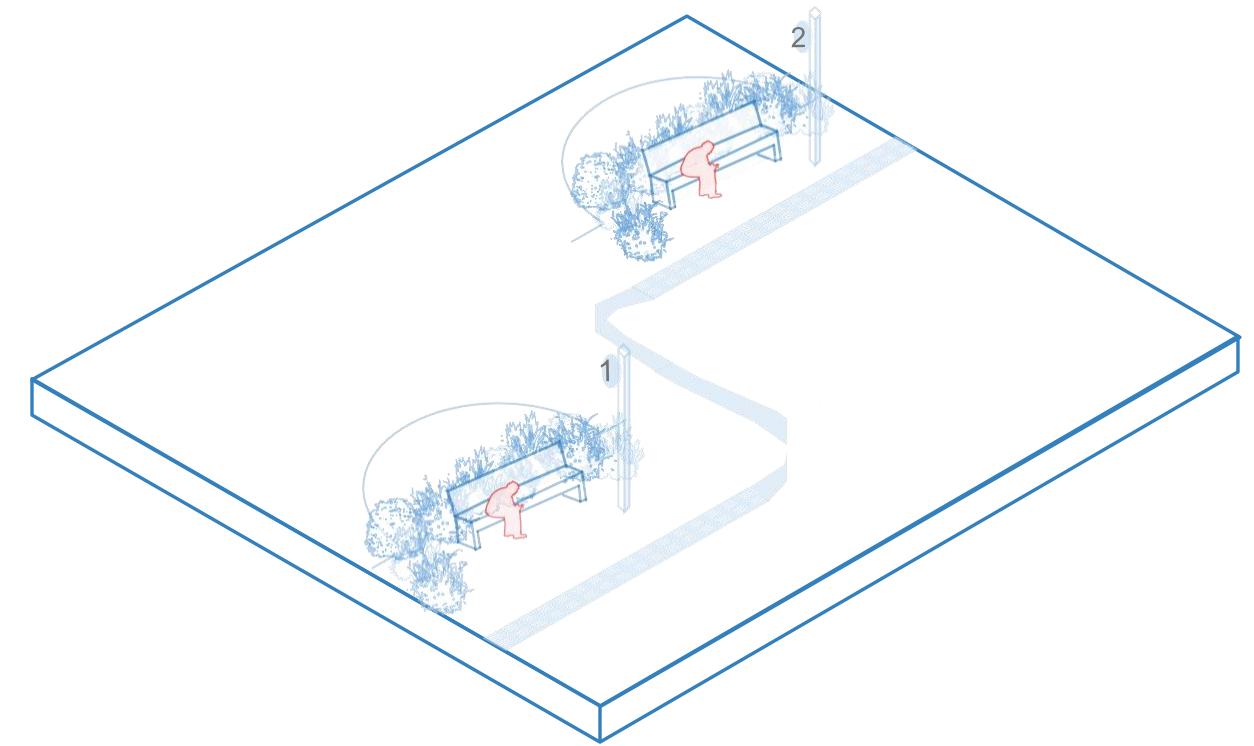
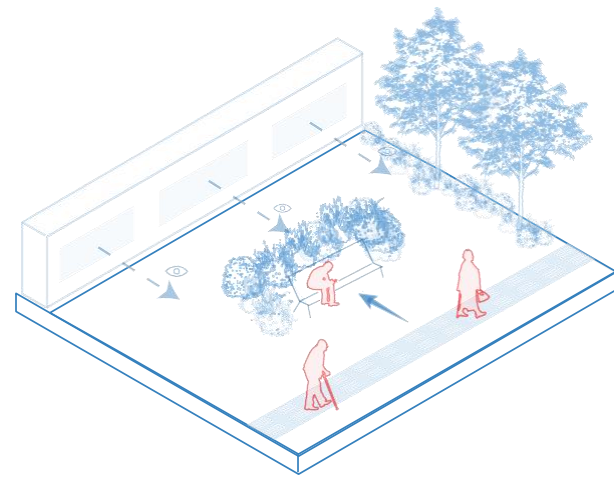
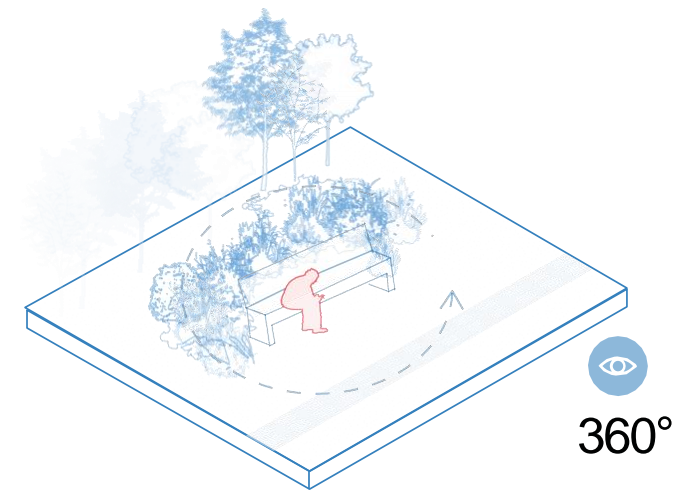
Woonkamer(s)



Gebouw in context



Rustplekken



1. **Beleid en visie**
2. **Innovatie en experiment**
3. **Samenwerking en governance**
4. **Financiële duurzaamheid**
5. **Toezicht en verantwoording**
6. **Inclusie en bewonersperspectief**
7. **Brede maatschappelijke impact**

Reflectievraag voor toezichthouders

Wat heeft u nodig als toezichthouder om dit type innovatie te beoordelen en te ondersteunen? Welke informatie, kaders of instrumenten zouden uw rol versterken?

Discussie



bouw geen zorgwoningen

Maak alle woningen geschikt!